

RESOLUTION NO. 24-29

A RESOLUTION TO APPROVE A PETITION FOR ANNEXATION OF LOTS 22 – 25 OF BLOCK 1, LOTS 22 – 36 OF BLOCK 5, LOTS 16 – 34 OF BLOCK 6, FREEDOM LANDING SUBDIVISION TO THE CITY OF BOX ELDER, MEADE COUNTY, SOUTH DAKOTA

WHEREAS, the City of Box Elder has received a written petition for voluntary annexation signed by not less than three-fourths of the registered voters and by the owners of not less than three-fourths of the value of the territory sought to be annexed to the municipality; and

WHEREAS, certain territory, hereinafter more particularly described, is contiguous to the City of Box Elder, South Dakota; and

WHEREAS, the Common Council of the City of Box Elder deems that said area be annexed thereto as follows:

As part of the General Residential 2 (GR2) Zoning District: Lots 22 through 25 of Block 1, Lots 22 through 36 of Block 5, Lots 16 through 34 of Block 6, and Dedicated Right-of-Way, Freedom Landing Subdivision (formerly a portion of E½ of the NW¼ of the SE¼ and the W½ of the NE¼ of the SE¼ of Section 8, T2N, R9E, B.H.M.) Located in the NW¼ of the SE¼ and the NE¼ of the SE¼, Section 8, T2N, R9E, B.H.M., Meade County, South Dakota.

NOW, THEREFORE, BE IT RESOLVED by the Common Council of the City of Box Elder, that the boundaries of said City of Box Elder, South Dakota, be and they hereby are extended to include the area contiguous to the City of Box Elder, described as follows:

Lots 22 through 25 of Block 1, Lots 22 through 36 of Block 5, Lots 16 through 34 of Block 6, and Dedicated Right-of-Way, Freedom Landing Subdivision (formerly a portion of E½ of the NW¼ of the SE¼ and the W½ of the NE¼ of the SE¼ of Section 8, T2N, R9E, B.H.M.) Located in the NW¼ of the SE¼ and the NE¼ of the SE¼, Section 8, T2N, R9E, B.H.M., Meade County, South Dakota.

PASSED, APPROVED AND ADOPTED this 17 day of December, 2024.

ATTEST:

[Handwritten signature of Renee Baker]

Renee Baker, Acting Finance Officer

[Handwritten signature of Larry Larson]
Larry Larson, Mayor



ATTESTATION

I, Chaz Kokesh, the City Clerk of the City of Box Elder, South Dakota, do hereby attest and state the above resolution was published on December 26, 2024 in the manner required by law and that all procedures required by the State of South Dakota law were complied with. This resolution shall become effective on the twentieth day after its publication, that date being: January 15, 2025.

Chaz Kokesh
Chaz Kokesh, City Clerk

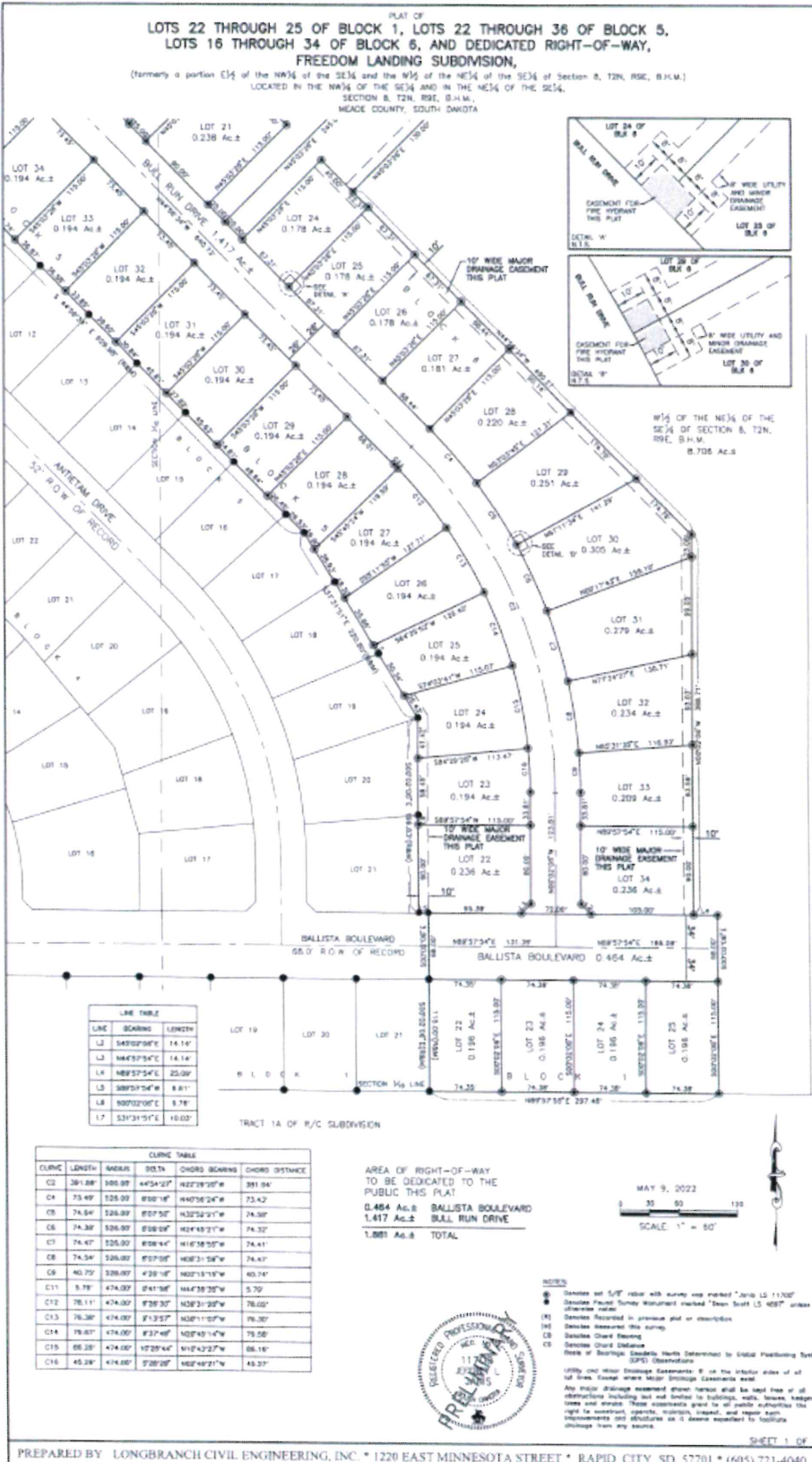
CITY OF BOX ELDER RESOLUTION NO. 24-29 EXHIBIT PAGE 1

Annexation Location:

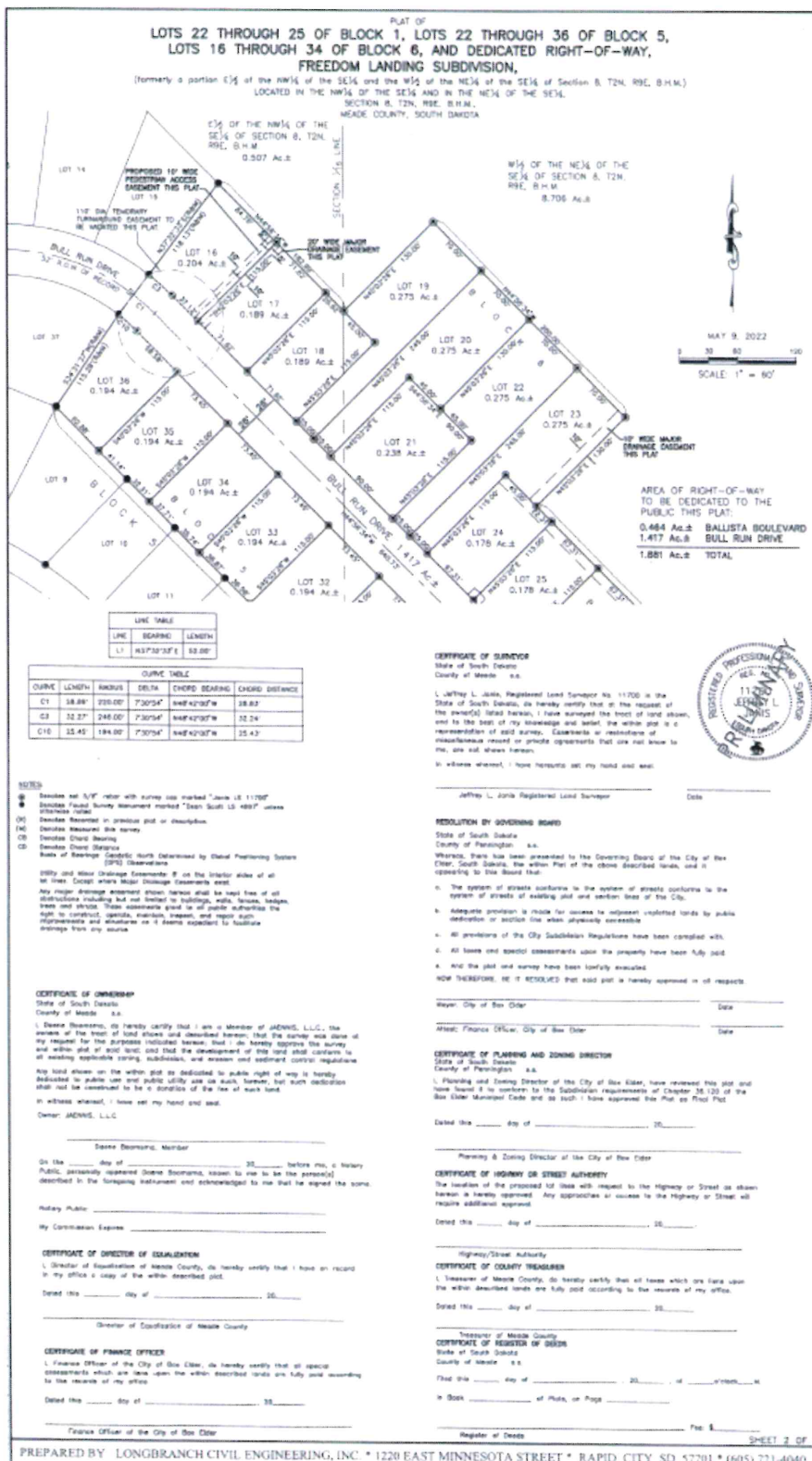
Parcel ID: Portions of 32.08.41

Legally Described as:

Lots 22 through 25 of Block 1, Lots 22 through 36 of Block 5, Lots 16 through 34 of Block 6, and Dedicated Right-of-Way, Freedom Landing Subdivision (formerly a portion of E½ of the NW¼ of the SE¼ and the W½ of the NE¼ of the SE¼ of Section 8, T2N, R9E, B.H.M.) Located in the NW¼ of the SE¼ and the W½ of the NE¼ of the SE¼ of Section 8, T2N, R9E, B.H.M., Meade County, South Dakota.



CITY OF BOX ELDER RESOLUTION NO. 24-29 EXHIBIT PAGE 2



Annexation Location:

Parcel ID: Portions of 32.08.41

Legally Described as:
 Lots 22 through 25 of Block 1, Lots 22 through 36 of Block 5, Lots 16 through 34 of Block 6, and Dedicated Right-of-Way, Freedom Landing Subdivision (formerly a portion of E½ of the NW¼ of the SE¼ and the W½ of the NE¼ of the SE¼ of Section 8, T2N, R9E, B.H.M.) Located in the NW¼ of the SE¼ and the NE¼ of the SE¼, Section 8, T2N, R9E, B.H.M., Meade County, South Dakota.